



[CLICK for More Info Online](#)

Custom-Fit Transmission Crossmember and Late-Model Ford Adapter



Model	Year
Mustang	1964-1973
Nova	1962-1967
Universal	29" max. width



Crossmember bracket fits GM-style aftermarket urethane mounts.



Weld-on frame brackets (2-3/4" tall) match Mustang and Nova rail height. Must be trimmed for shorter rail height of Falcons.

Custom-Fit Transmission Crossmember

Whether altering drivetrain position or swapping in a non-factory transmission, the weld-in transmission crossmember kit from Total Control Products is the correct part for the job. Sized to directly fit '64-70 Mustangs and '62-67 Novas, the crossmember has a maximum width of 29" and ships as an unassembled weld-together kit, allowing ultimate flexibility in positioning the drivetrain. By rotating the 1-1/4" diameter bent tube prior to installing the billet tube adapters drivetrain angle is adjustable with a maximum drop height of four inches. Additionally, the weld-on frame brackets can be positioned as needed along the length of the factory rail to easily accommodate transmissions of various lengths. The crossmember bracket accepts common GM-style urethane mounts for directly mounting to most commonly used transmissions. For 2005-up Ford Mustang manual or automatic transmission swaps, a simple adapter bracket is available to convert the three-hole vertical-plane bolt-pattern to the common two-bolt pattern.

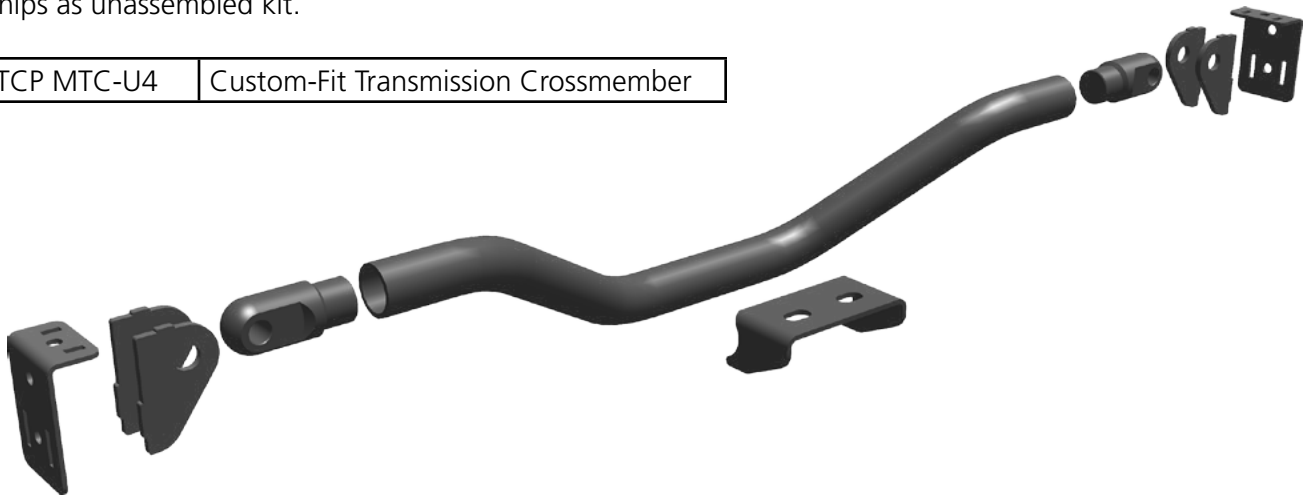
Features and Benefits

- **Up to 4" crossmember drop height**
- **Maximum width of 29"**
- **Sturdy 1-1/4" diameter**
- **Solid billet-steel tube adapters**
- **Gusseted brackets**
- **Suitable for most commonly used transmissions**

Transmission Crossmember

Ships as unassembled kit.

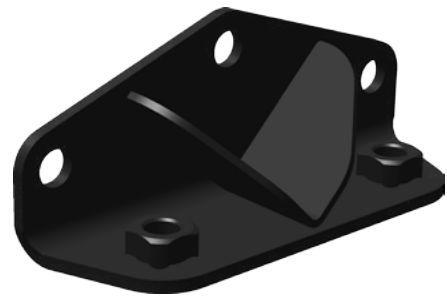
TCP MTC-U4	Custom-Fit Transmission Crossmember
------------	-------------------------------------



Late-Model Ford Transmission Adapter

Welded-steel bracket mounts directly to the three-bolt pattern of 2005 and newer Mustang transmissions (manual or automatic), enabling use of polyurethane mounts with 7/16" x 4" 2-bolt pattern.

TCP MTC-A1	Late-Ford Transmission Adapter
------------	--------------------------------



Urethane Transmission Mount

GM-style universal polyurethane transmission mount. (7/16-14 on 1-1/2" centers to 3/8" bolt on 3-3/4"-4-1/4" slot)

ESP 3.1108G	GM-Style Urethane Transmission Mount
-------------	--------------------------------------



All prices subject to change. Current pricing available at www.totalcontrolproducts.com.



Total Control Products
8661 Younger Creek Drive – Sacramento, CA 95828
A Chris Alston's Chassisworks, Inc., Brand

Order: 800-722-2269
Tech: 916-388-0288
Fax: 916-388-0295

tcp sales@cachassisworks.com
tcp tech@cachassisworks.com
www.totalcontrolproducts.com