

Knob Style Proportioning Valve, Residual Pressure Valves & Caliper Pressure Gauge



Brake System Valves & Gauges

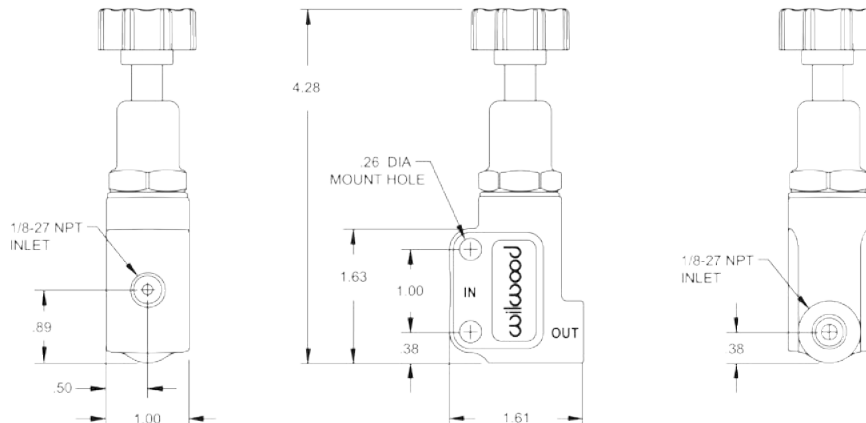
To compliment our line of brake kits and components, these additional items will enable you to fine tune your brake system for improved performance. The proportioning valve provides brake bias adjustment to optimize available traction and heavy braking stability. Residual pressure valves maintain line pressure at the caliper or wheel cylinder to provide a firmer pedal and more immediate braking response. Finally the caliper pressure gauge allows precise measurement of line pressure to ensure the system is working correctly as well as establish an adjustment baseline to work from.

Brake System Valves & Gauges

Proportioning Valve

The Wilwood proportioning valve uses a compact, lightweight (5.2 oz.) forged billet design and is an essential component for fine tuning your brake system. Pressure adjustments range from 100-1000 psi and provide for a maximum decrease of 57% in line pressure, the most of any valve. The valve is typically installed in-line to adjust rear brake line pressure, but can also be installed to reduce front brake line pressure in skinny tire ProStreet or drag racing vehicles.

Part Number
WW 260-8419

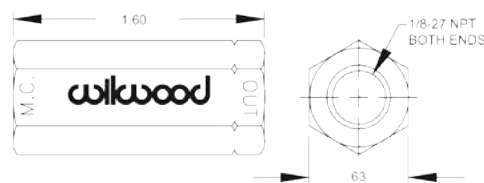


Residual Pressure Valves

The Wilwood in-line pressure valves retain a minimum brake line pressure to help eliminate excessive pedal travel in disc and drum brake systems. Vehicles equipped with drum brakes require a 10 psi residual pressure valve to counteract spring tension. The 2 psi valve is used on disc brake systems with master cylinder is mounted below the calipers. Valves are available individually or packaged with fittings.



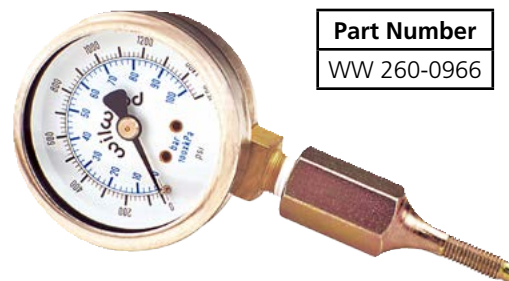
Brake Type	Valve Only	Valve w/ Fittings
Disc (2 psi, blue)	WW 260-1874	WW 260-3278
Drum (10 psi, red)	WW 260-1876	WW 260-3279



Caliper Pressure Gauge

The easy to read two inch diameter non-hazing face allows for quick brake line pressure check from 0-1500 psi. 20 psi graduations and accuracy to 1.5% permit reliable brake bias setup and brake system troubleshooting. Gauge threads directly in place of bleeder valve.

Part Number
WW 260-0966



All prices subject to change. Current pricing available at www.cachassisworks.com.



Chris Alston's Chassisworks, Inc.
8661 Younger Creek Drive
Sacramento, CA 95828

Order: 800-722-2269
Tech: 916-388-0288
Fax: 916-388-0295

sales@cachassisworks.com
www.cachassisworks.com